

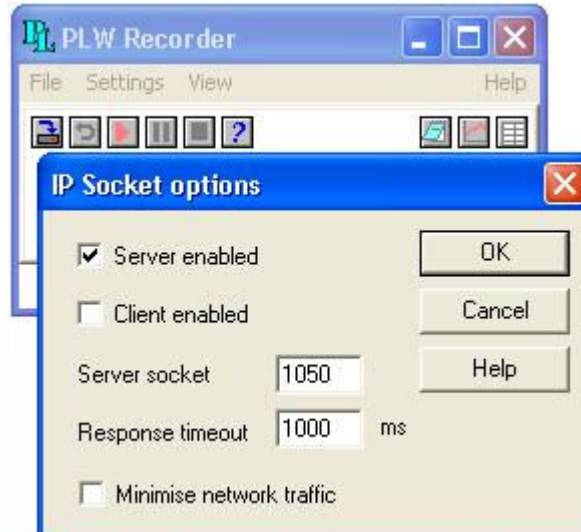
## IP networking with PicoLog recorder

### **Server PC**

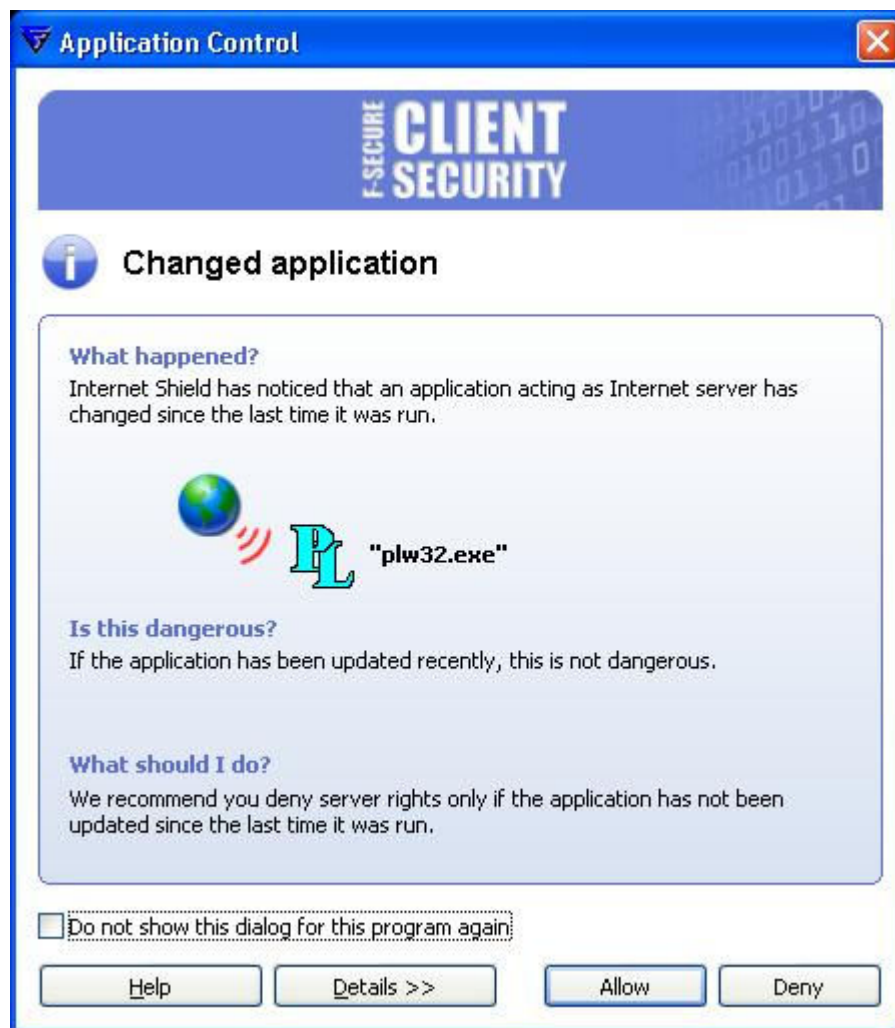
On the server computer, go to preferences and choose 'IP Sockets':



Next select 'Server enabled' (advanced users can choose to change the server socket from default). Click 'OK' and restart the software.



Ensure that your firewall allows PicoLog recorder to run:



Now configure the system as you would normally do, adding the channels you will require. You do not need to do any recording or create data files or do any scaling, as all this can be done on the client PC.

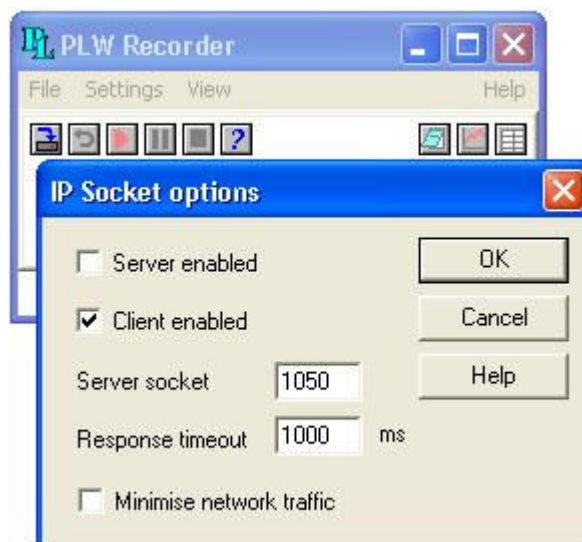
Note the IP address of the server PC. This can be found by going into the command prompt (click the Start button, press the 'r' key on your keyboard, type *cmd* and then click 'OK'). Once in the command prompt, type *ipconfig* and then press Enter.

## **Client PC**

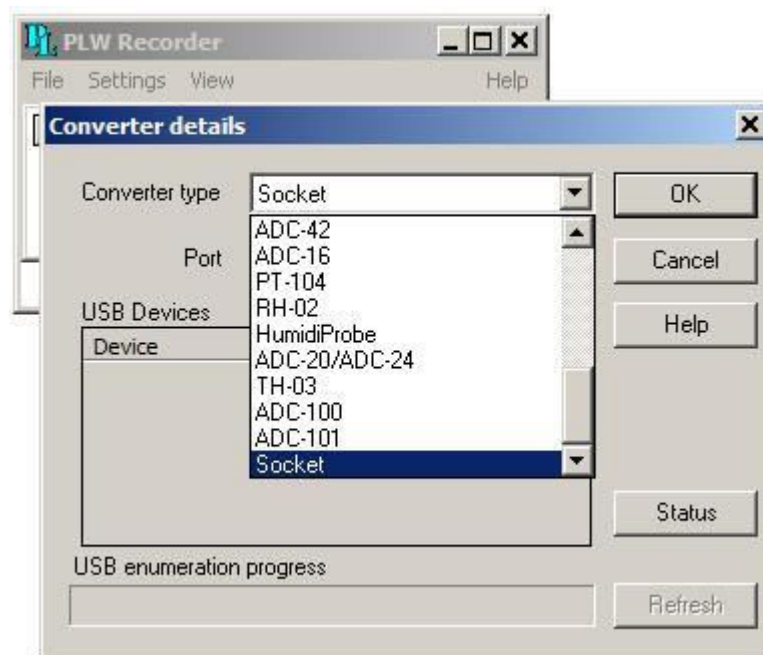
On the client PC, go to Preferences:



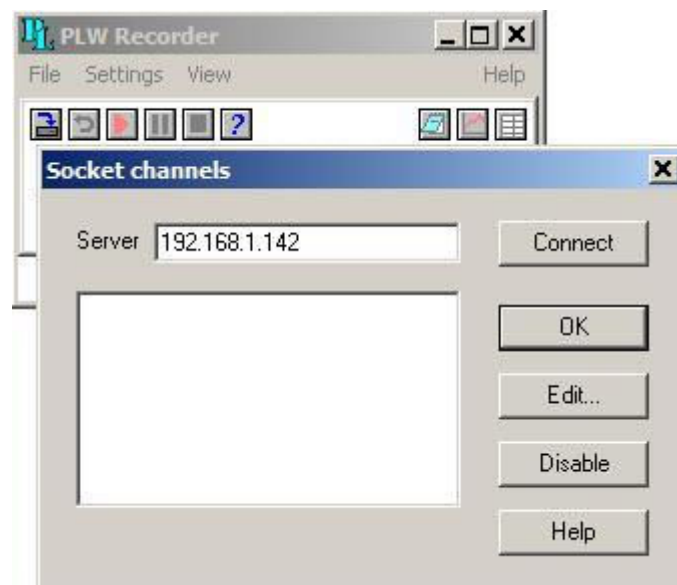
Then select 'Client Enabled'. (If you changed the Socket at the server PC, also change it here to the same number). Click 'OK' and restart the software.



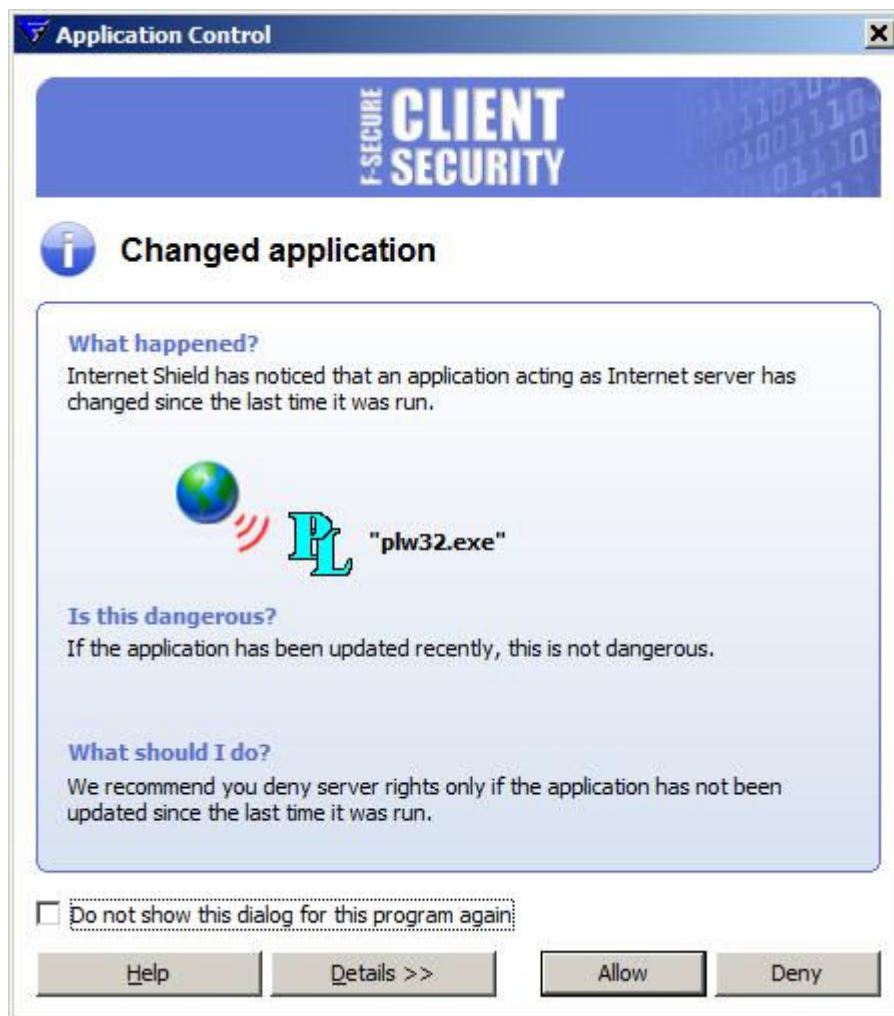
Go through your configuration and select 'Socket' as your converter:



Type the IP address of your server computer and click 'Connect':



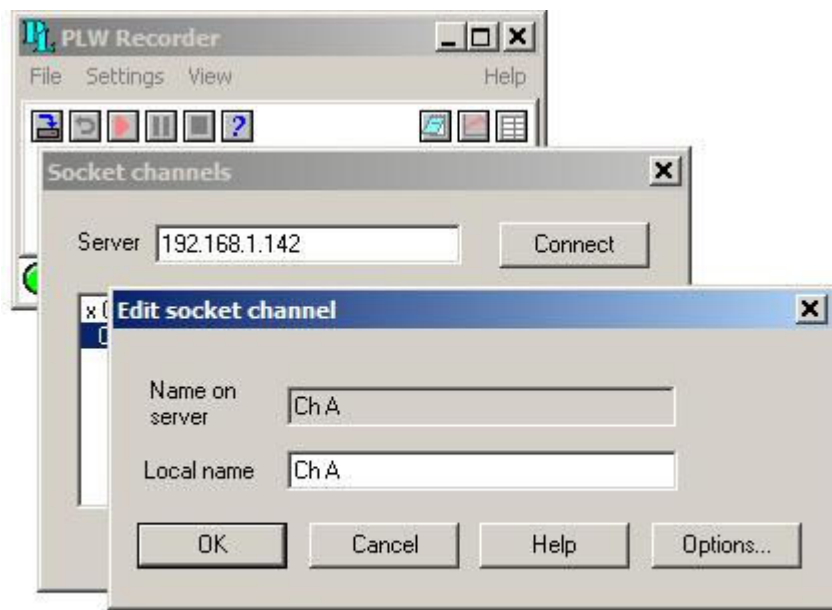
Again, make sure your firewall allows PicoLog recorder to run:



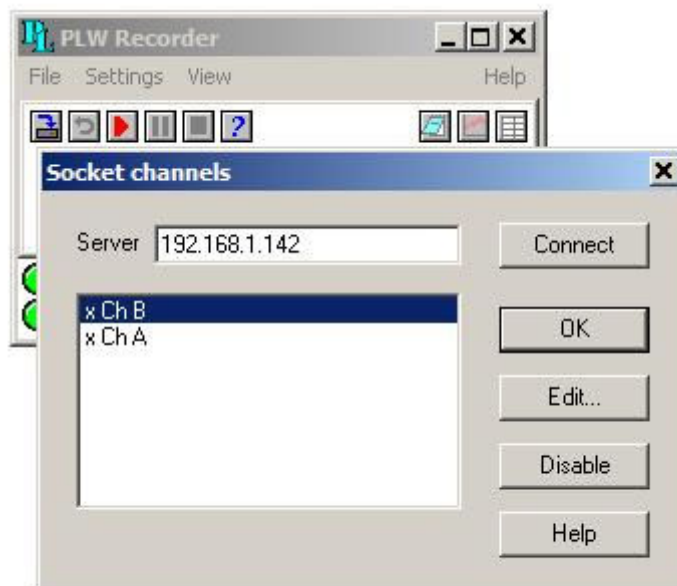
You can now view the channels that were added on the server PC:



Click 'Edit' to enable the channels you wish to record:



Once this is done you should see an 'x' next to the enabled channels:



You can now create a data file or start recording as usual.

NOTE: If you wish to control your logger through the internet, you may need to use port forwarding.