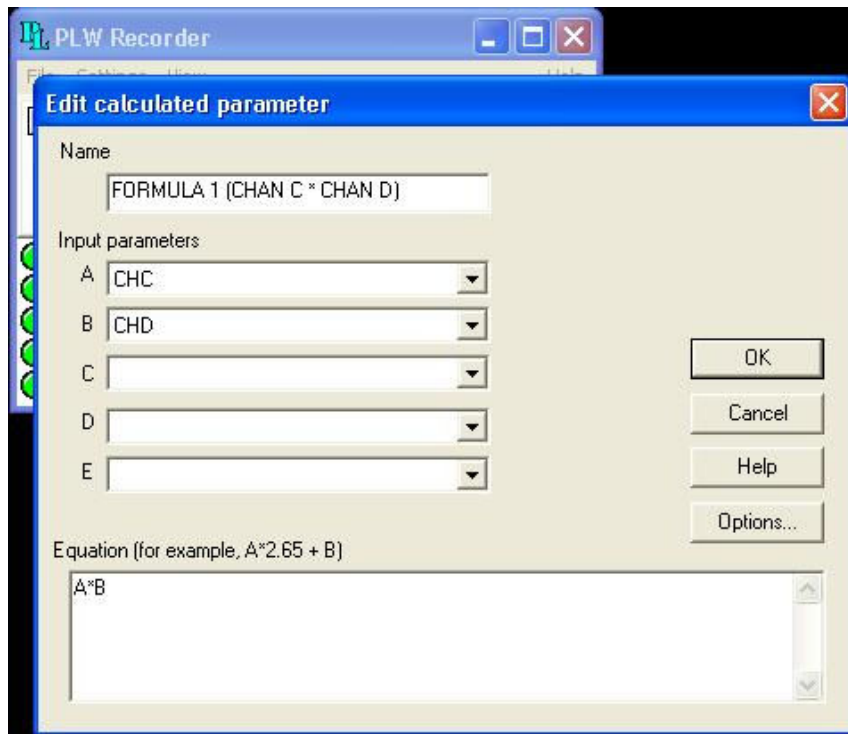
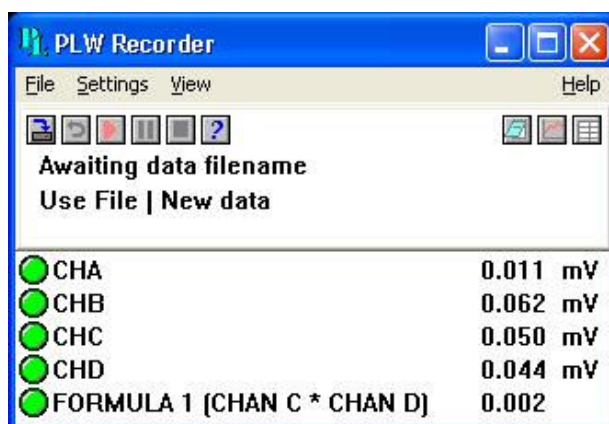


- The calculated parameters do not represent the channels of your scope, they can represent any channel, think of it as a variable. So you have 5 variables:
 - A, B, C, D and E



- These variables can have any channel assigned to them, in the example above Channel C is assigned to variable A and Channel D is assigned to variable B. So variable A * B is equivalent to Channel C * Channel D.
- Name is the name you will give to your equation which in a sense will become a "virtual" channel.
- Once you have done this you can go back to the main menu and you will see 5 channels.



- If you wanted to you can add more calculated parameters, also you can assign them some units.