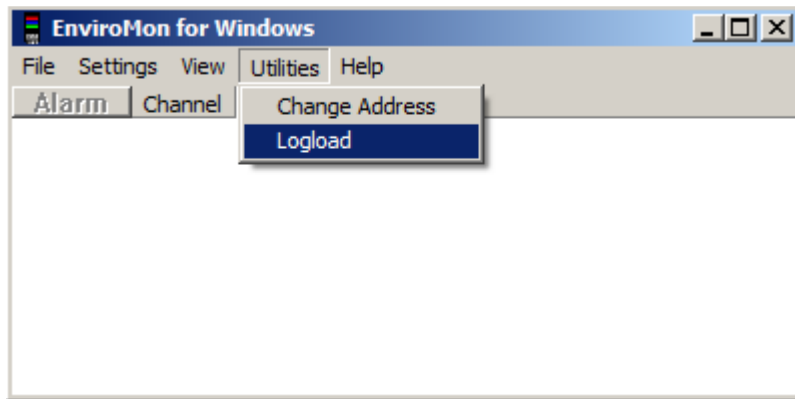
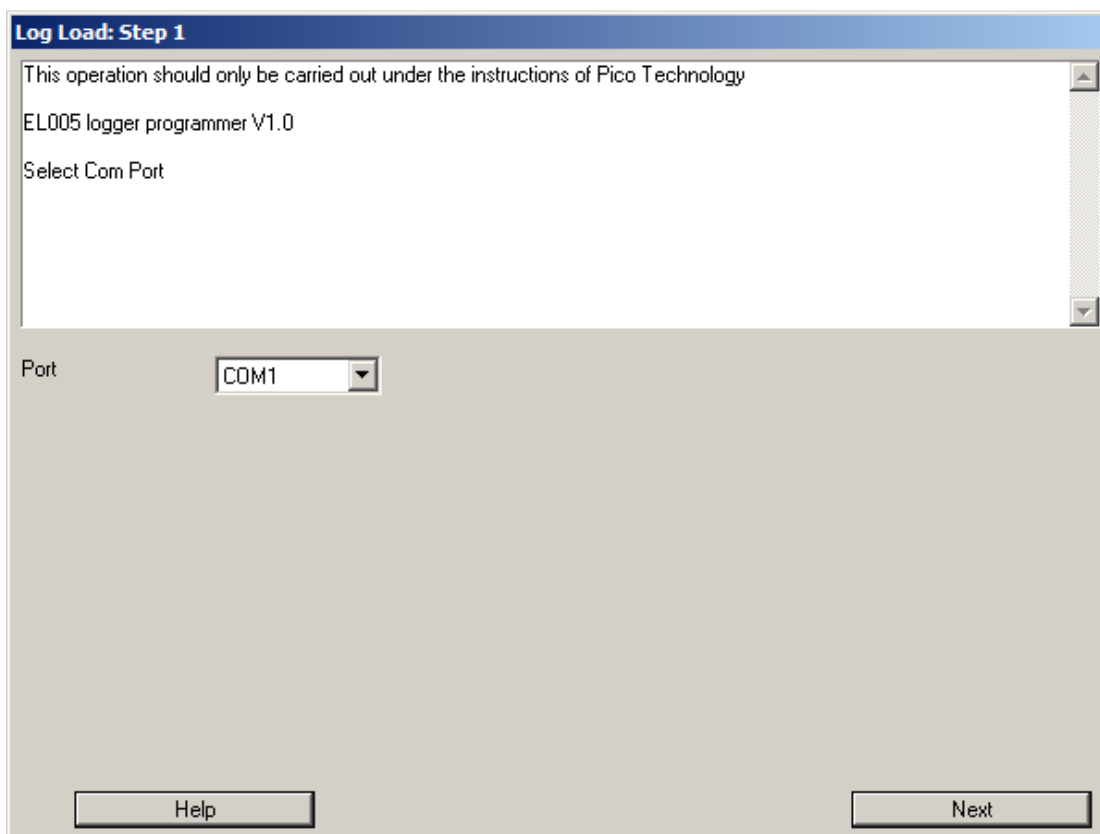


Logload Instructions

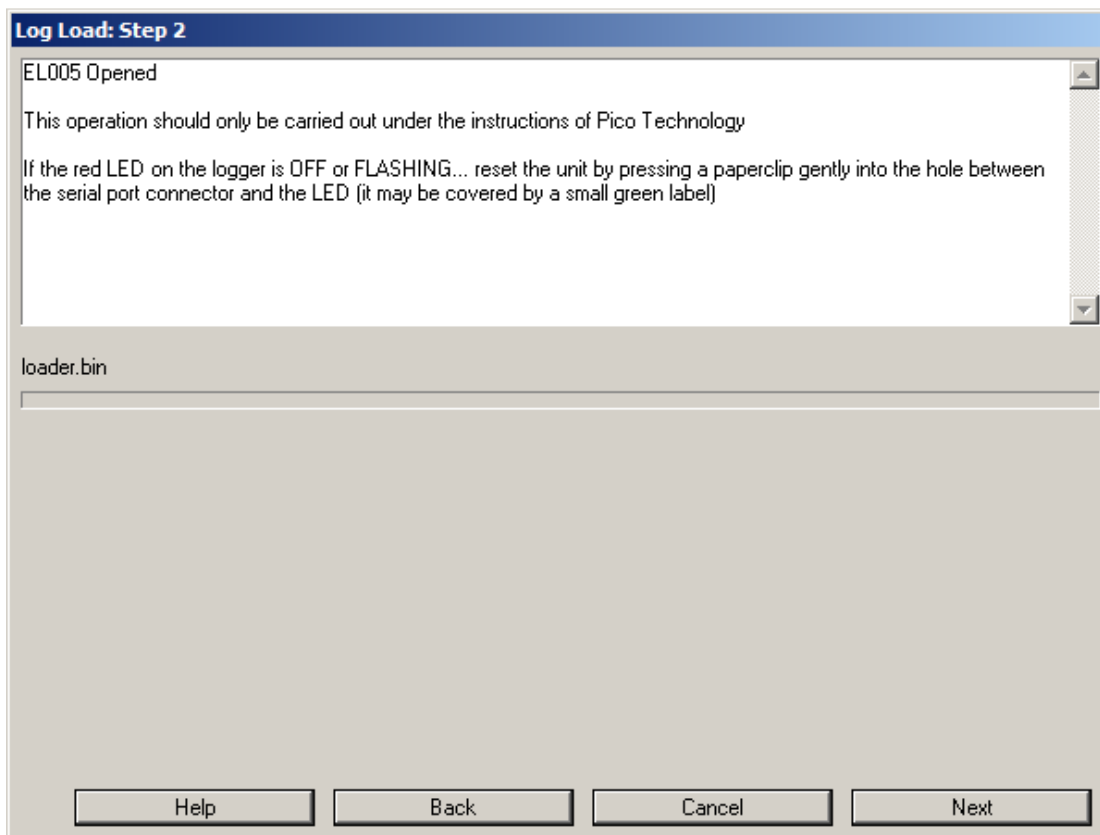
The Logload can be accessed from the Utilities menu



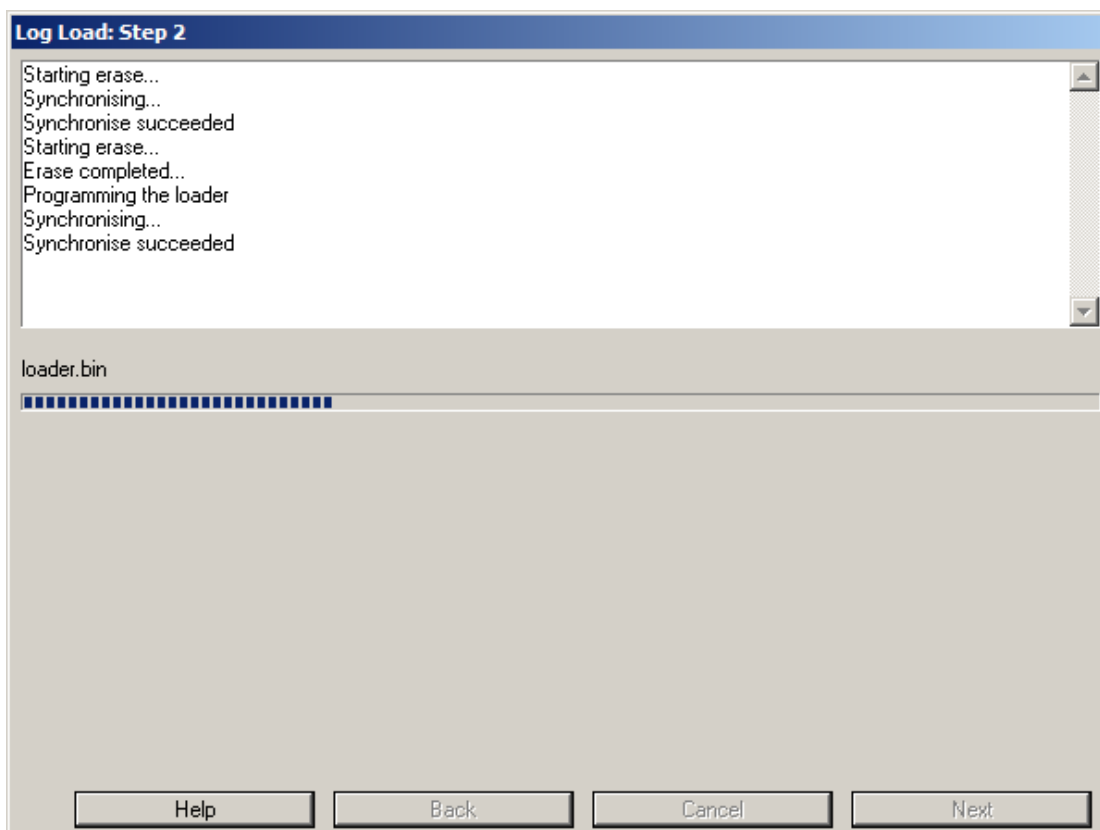
First choose the appropriate COM port and then click the “Next” button



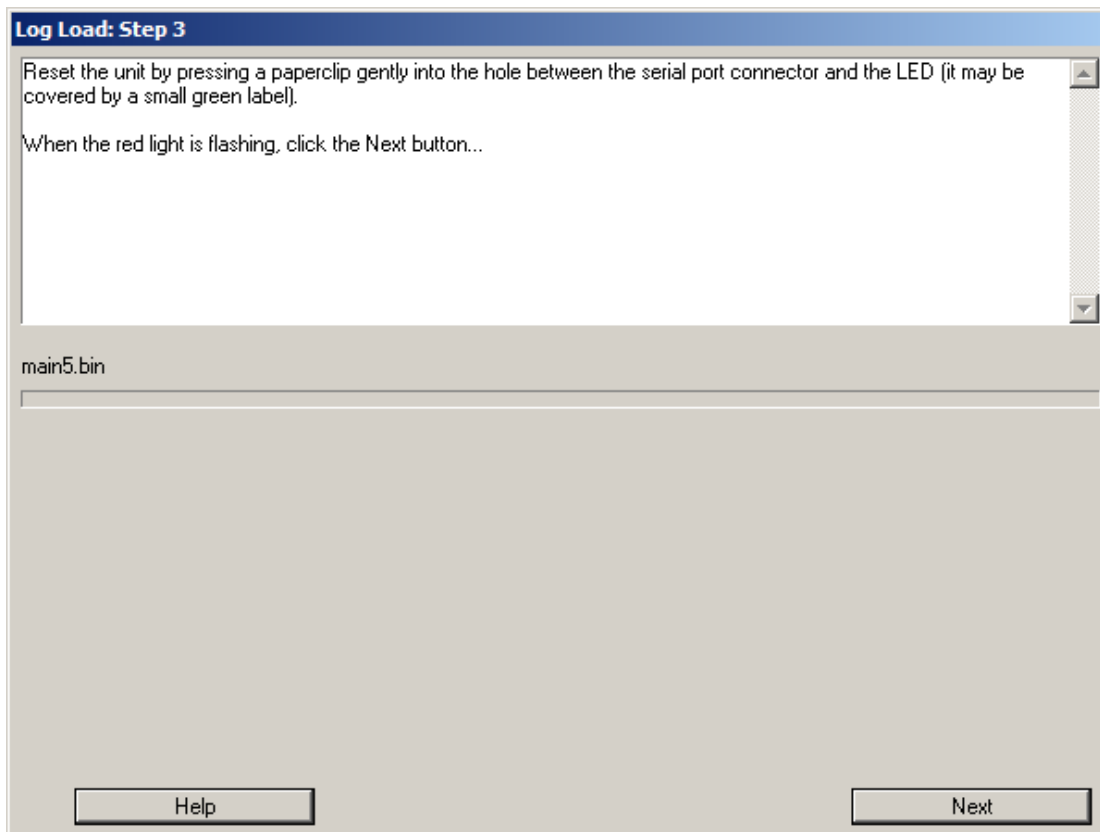
Reset the logger by inserting a paper clip in the small hole on the EL005 logger (usually behind the green sticker, between the serial port and red LED) the light will go from flashing to a solid light, note the loggers needs to have a solid light before proceeding.



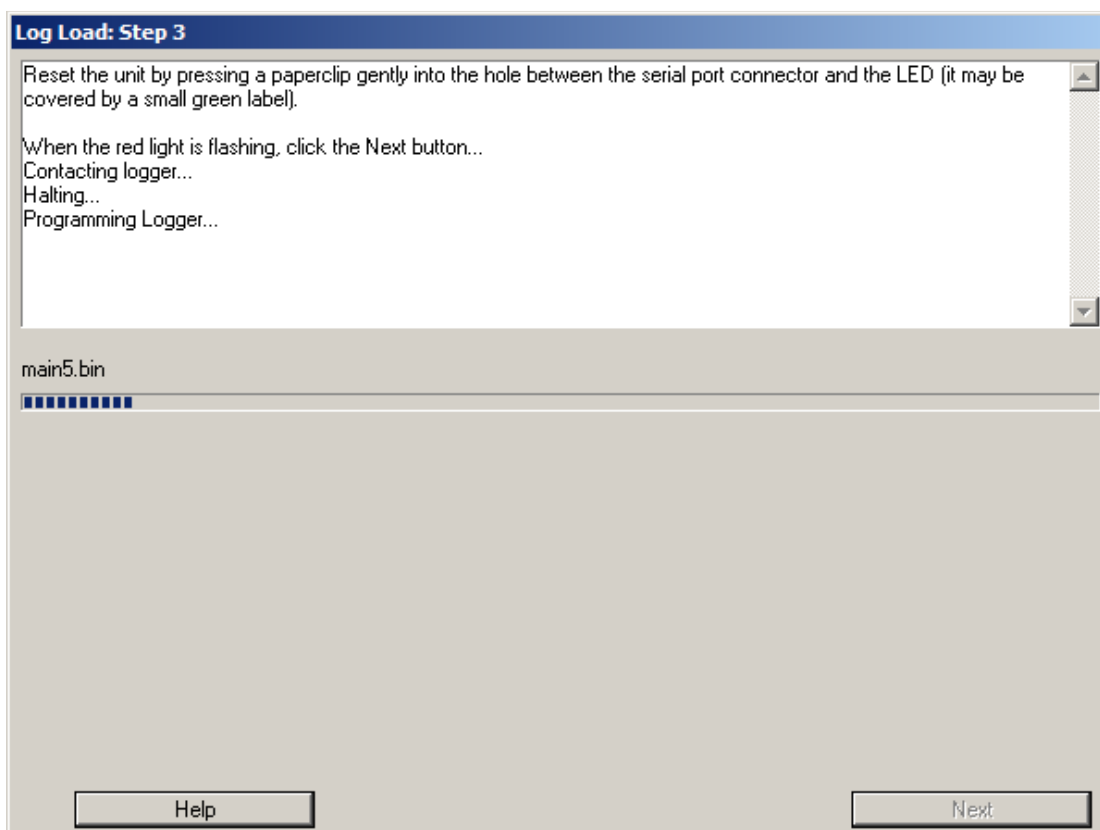
The logger may take a minute or two to go through the first stage of configuration, when this is completed click on the "Next" button.



The logger will now need to be reset again using the paper clip, this time the light will go from solid to flashing, note the LED has to be flashing before proceeding to the next stage.



This process will take a minute or two to complete



Once this is complete you can either configure the logger or just finish.

