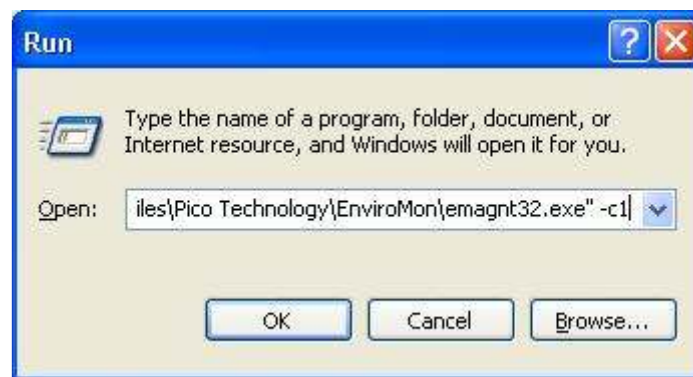


Using the run command load Emagent putting in the com port number the logger is connected to and the port number if different from default.

For example if you had the logger on COM 1 you would type in the following command under Start-> run

"c:\Program Files\Pico Technology\EnviroMon\emagnt32.exe" -c1



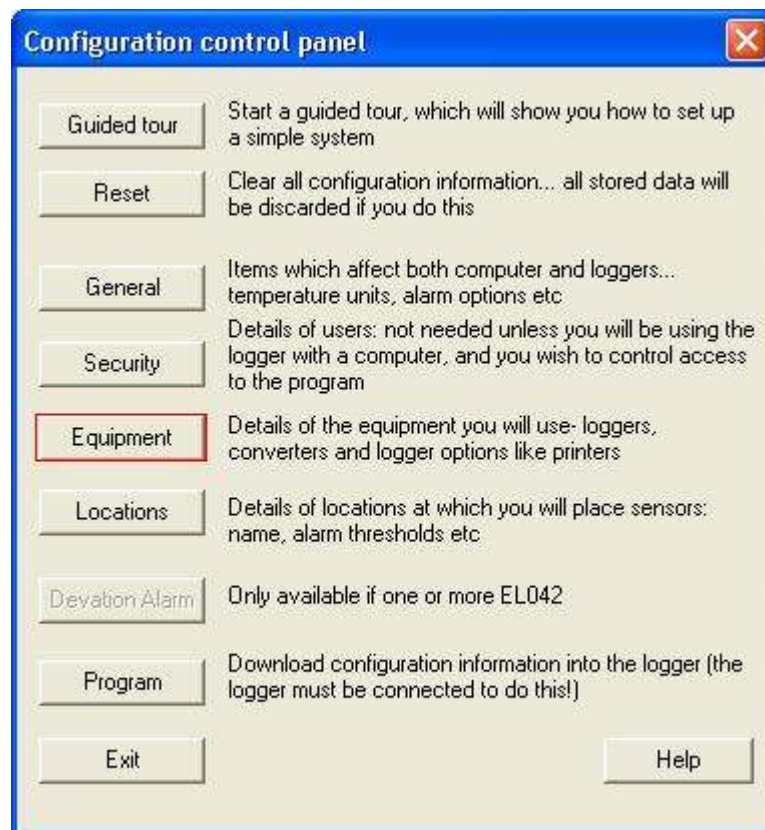
By default the port number is 1050 if you wanted to choose another port for example 1130 you would type in

"c:\Program Files\Pico Technology\EnviroMon\emagnt32.exe" -c1 -i1130

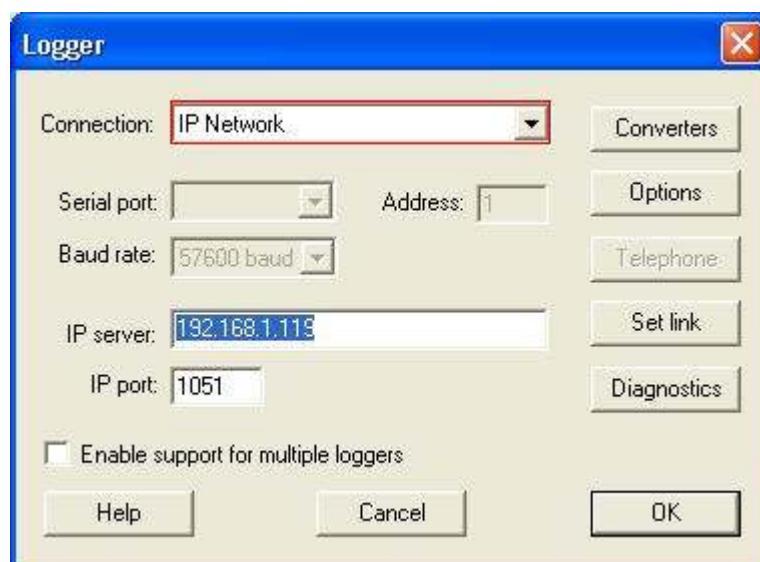
You will then need to allow emagent in your firewall settings.



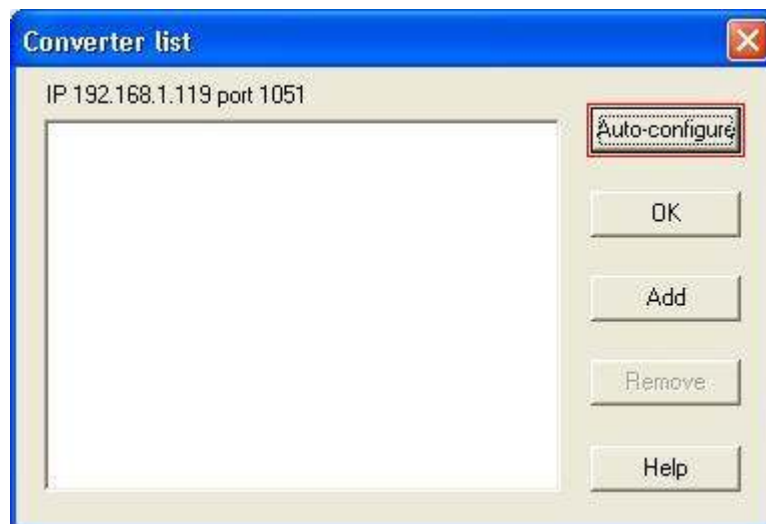
At the client PC you would run Enviromon and go to the Equipment section under the control panel



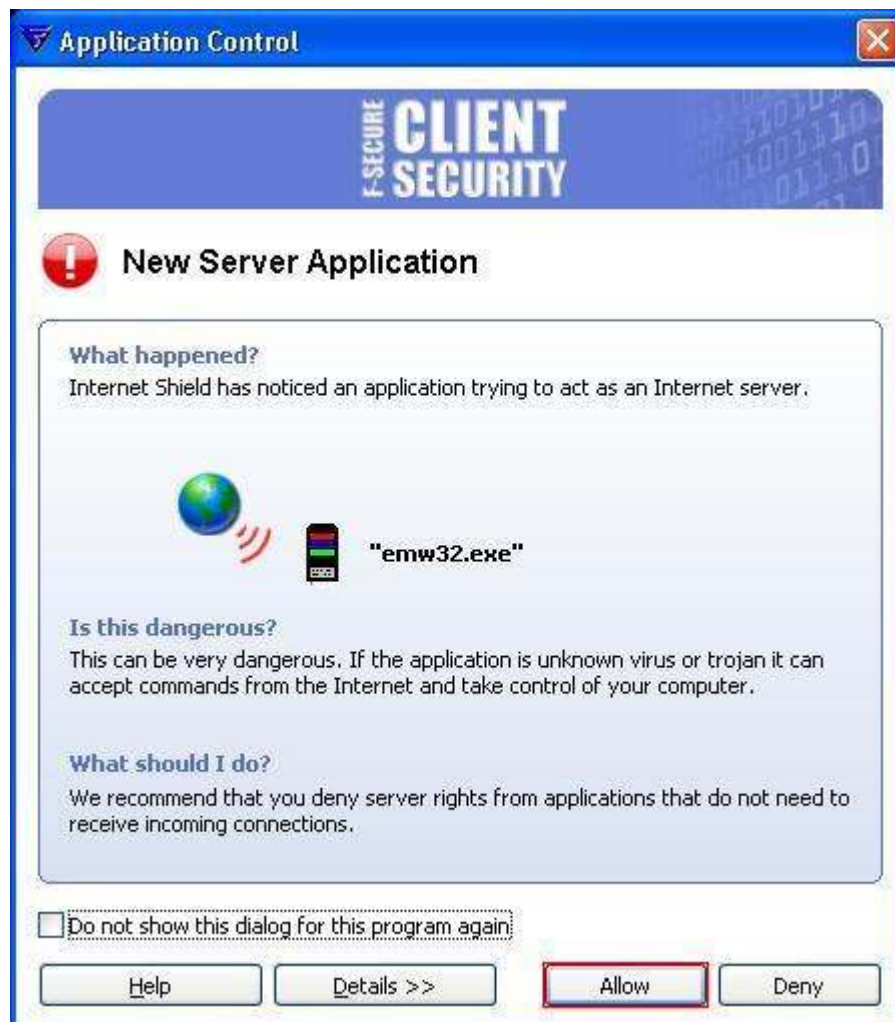
Then change the connection type to be IP Networking and type in the IP address of the server PC and the port number if different.



You can now go to converters and select Auto-configure



You will now need to ensure that the firewall at your client PC also allows enviromon access



You can now programme the logger as you normal.

If you want to monitor in realtime the data on multiple clients you will need the following files from one of the client PCs and paste them onto the folder of the new client PC:

envimon.in

emwevent.log

And any file with the .rdg extension (will contain any previously collected data)

These can be located in one of two locations by default, depending on your operating system.

For WindowsXP and previous operating systems (and Vista if User Account control is switched off)

c:\Program Files\Pico Technology\Pico Full\

For Vista if User Account Control is switched on (which it is by default)

c:\USERS\<user_id> \AppData\Local\VirtualStore\Program Files\Pico Technology\Enviromon\

where <user_id> is your user login.