

# Using the Belkin Network USB Hub with PicoScope



## 1. Introduction

PicoScope oscilloscopes are USB 2.0 devices that work best with a direct connection to the USB 2.0 port on your computer. However, there are times when you may need to operate your scope remotely from your computer, over your office network or even over the internet. Fortunately, there is a device that allows you to do this: the Belkin Network USB Hub.

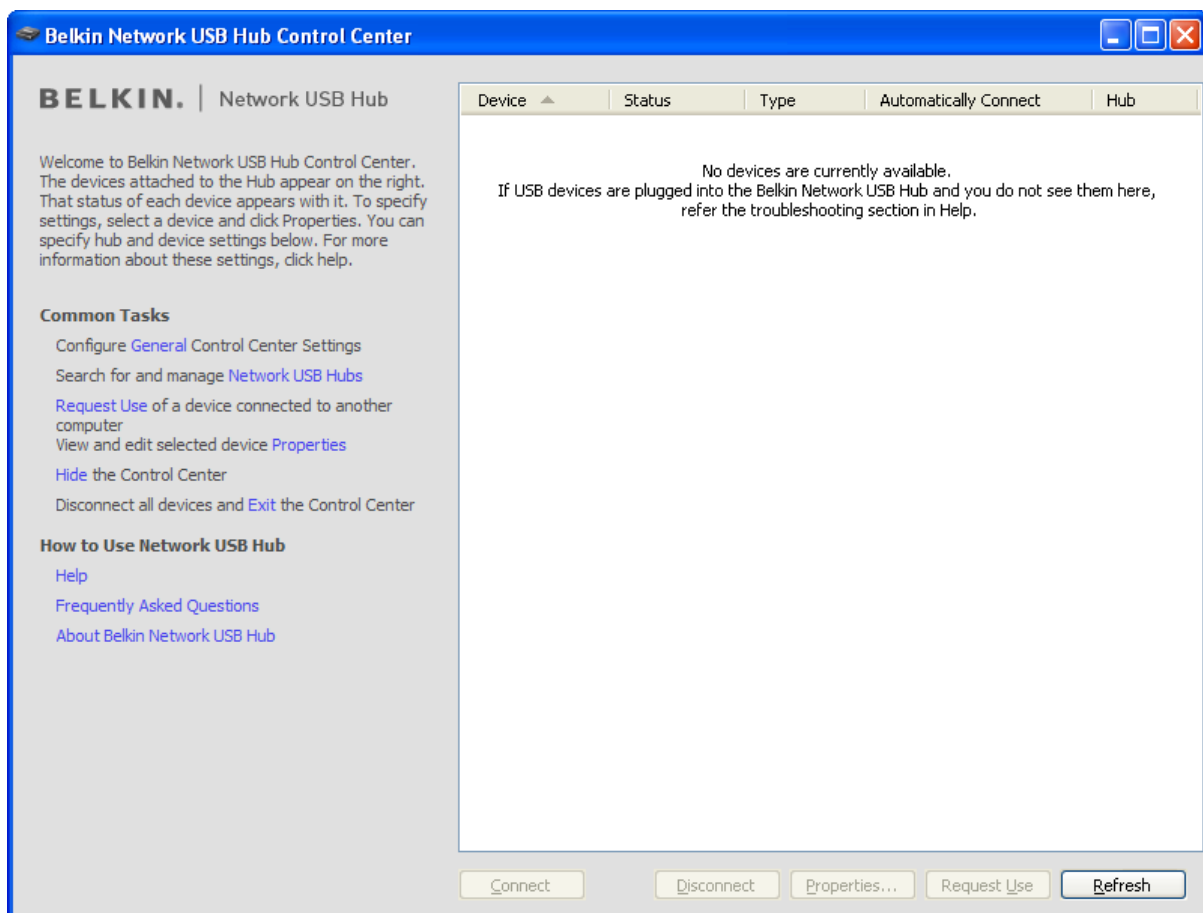
Installation is quite straightforward, although there is one simple extra step that you need to take for PicoScope devices. This application note will guide you through the process.

## 2. Installing the Belkin Network USB Hub

Installing the device is easy:

- Connect the power adapter (supplied) to the mains supply and plug it into the hub.
- Plug the hub into your office network using a standard RJ45 network cable.
- Insert the CD supplied with the hub into your computer and let it run.
- Wait for the **Network USB Hub Control Center** to appear on your screen.

At this stage there are no USB devices connected to the hub, so the **Control Center** will report that no devices are available, like this:



The hub is now ready for you to connect the PicoScope.

# Using the Belkin Network USB Hub with PicoScope



## 3. Installing the PicoScope oscilloscope

In this example we will be installing a PicoScope 2203 compact oscilloscope, but the same method works for any USB oscilloscope from Pico Technology.

- Plug the PicoScope into any USB port on the hub, on either the front or back of the unit, using a USB 2.0 cable. We recommend that you use the USB 2.0 cable supplied with the scope.

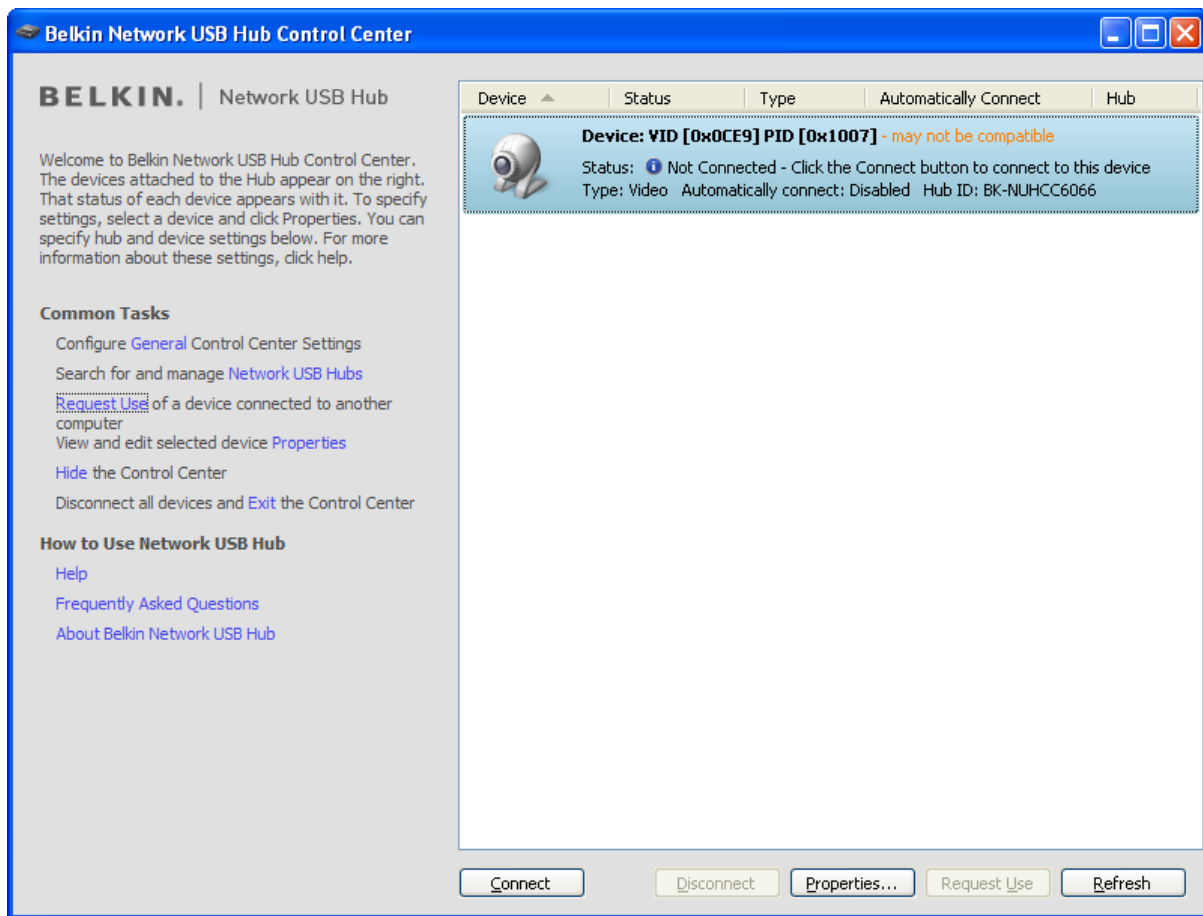
Our setup looked like this:



# Using the Belkin Network USB Hub with PicoScope



- An unidentified device appears in the **Control Center**, with a status of "Not Connected":

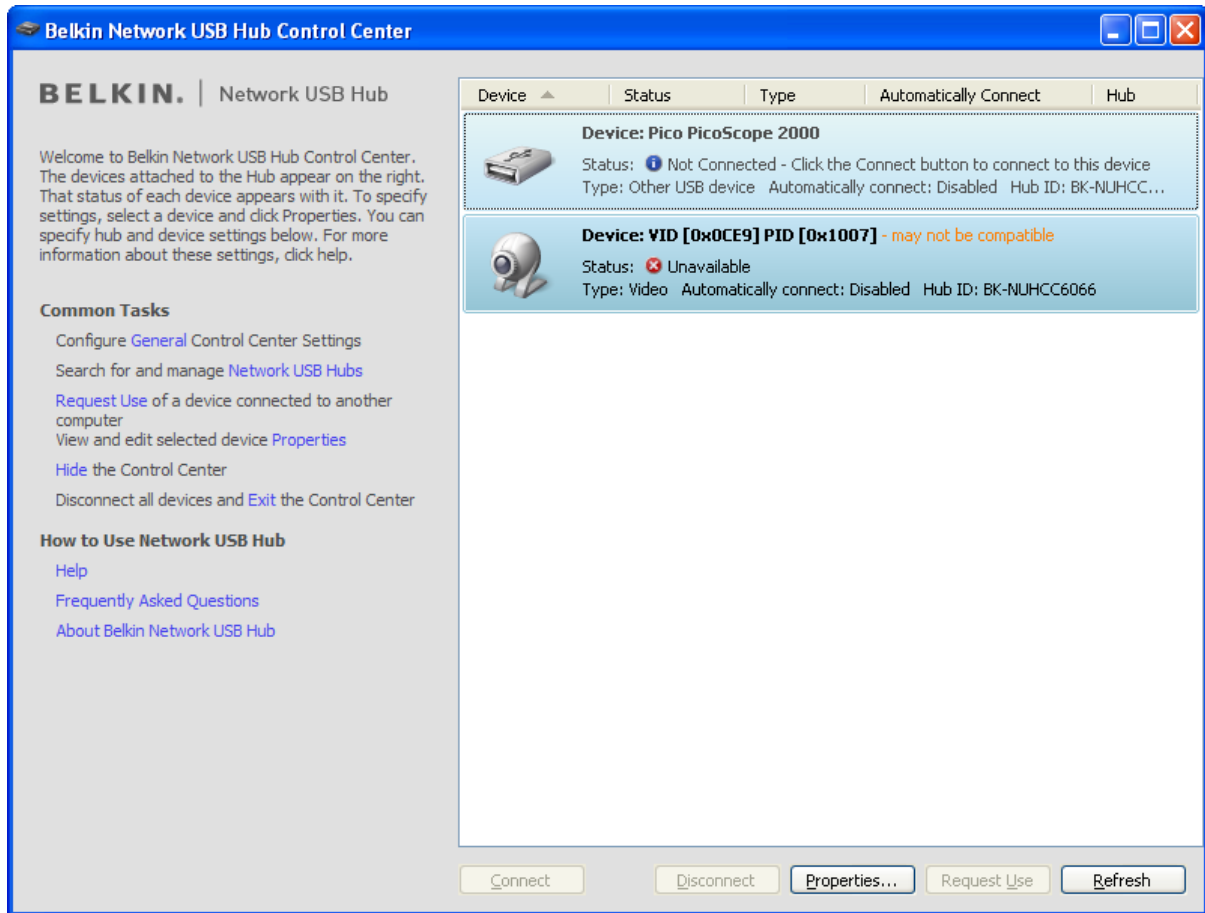


- Click the **Connect** button at the bottom of the window.
- The standard Windows **New Hardware Wizard** runs. You may have seen it before if you have previously connected the PicoScope directly to your computer. The wizard runs whenever the oscilloscope is detected on a different USB port: in this case, the USB port on the Network USB Hub. Just click the "Next" button in each window.
- When the **Hardware Installation** dialog appears, click "Continue anyway".
- Wait for the **New Hardware Wizard** to finish.

# Using the Belkin Network USB Hub with PicoScope



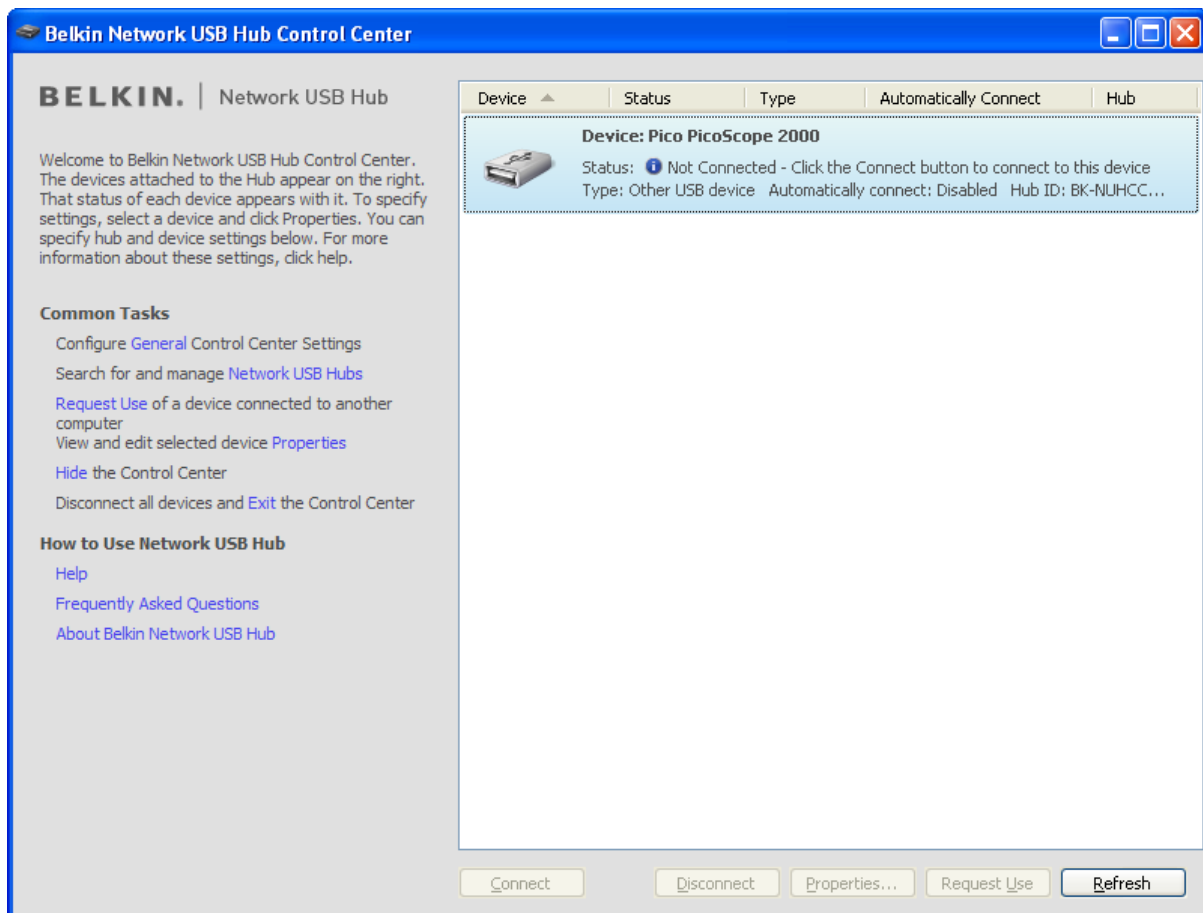
For a brief period during the installation, the **Control Center** shows two devices:



# Using the Belkin Network USB Hub with PicoScope



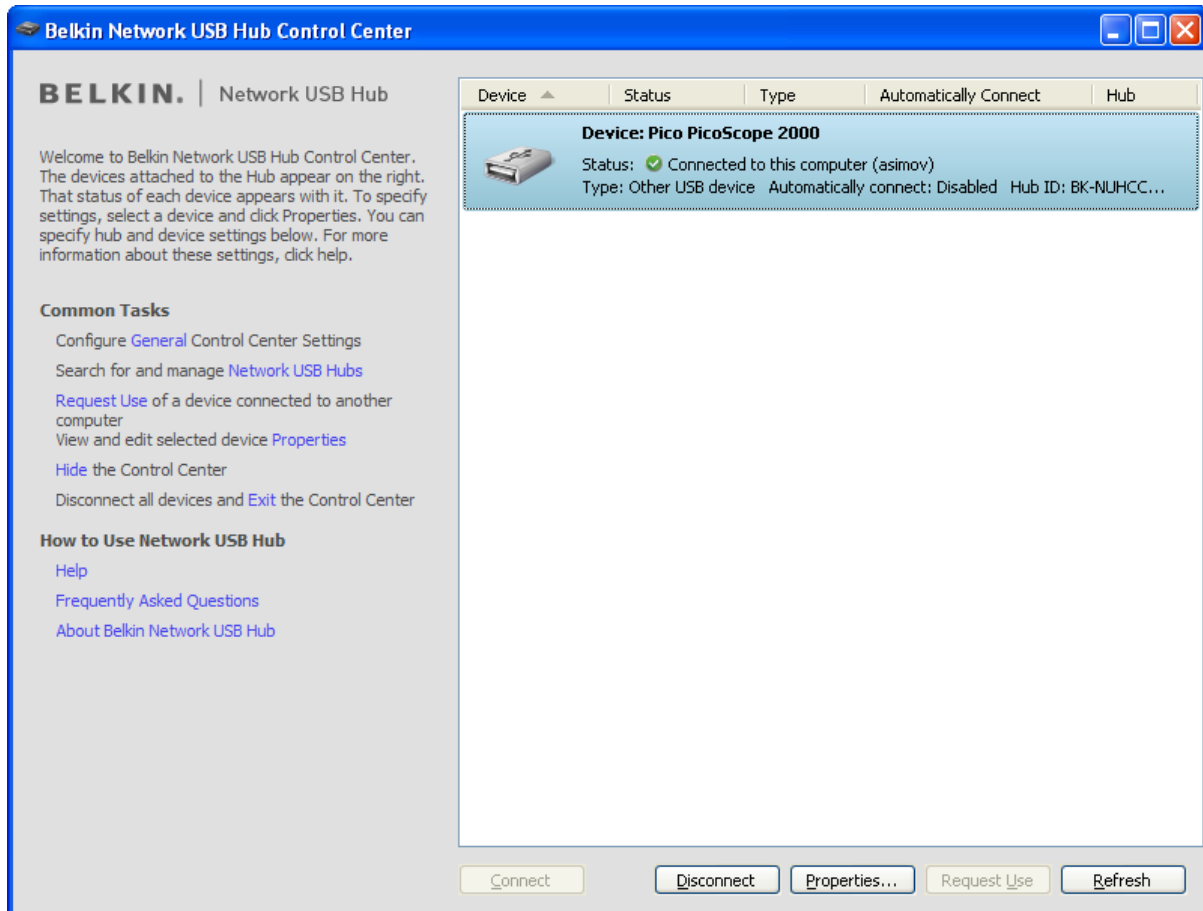
- Select the second device and click the "Refresh" button. The temporary entry for the second device will disappear, leaving only the PicoScope device in the list, like this:



# Using the Belkin Network USB Hub with PicoScope



- Select the PicoScope device and click "Connect".



This completes the installation. You can now run the PicoScope software and use the oscilloscope as if it were directly connected to your computer.

## 4. Notes

This procedure was tested using v1.4 of the Belkin Network USB Hub software CD and Version D of the hub (part no. F5L009uk). The computer was running Windows XP Professional with Service Pack 3.

## 5. References

*Belkin Network USB Hub Setup Guide, P75464-B*

## 6. Downloads

Download oscilloscope data sheets, Programmer's Guides, drivers and example source code from:

[www.picotech.com](http://www.picotech.com)